

ARVAND

Investment opportunities of Arvand Free Zone



Head office: Khoramshahr, Abadan-Khorramshahr highway,
central building of Arvand Azad Zone

P.C : 6313613137 TEL : +98 6153535191.2 FAX : +98 6153535200

Tehran office: No. 143, Khaled Islamboli Street, corner of 29th Street
P.C : 1516613313 TEL : +98 2188883040 FAX : +98 2188880900

WWW.ARVANDFREEZONE.COM



SCAN TO VIEW VIDEO CONTENT



© image graphic

ARVAND FREE ZONE, A GOLDEN OPPORTUNITY
FOR INVESTMENT, PRODUCTION AND EXPORT

TO GET CONTENT
SCAN ELECTRONICALLY





In the name of God

Contents

industry

Production of steel sheet and roof and wall sandwich panels	3
Production of steel Production of Autoclaved Aerated Concrete (AAC) prefabricated parts	3
Production of tempered glass	3
Production of raw Mdf from agricultural waste (Palm tree)	4
Production of jumbo bags and polypropylene bags	4
Production of wall packages and radiators	4
LED flexible paper production plan	5
Ready-to-eat pasta and lasagna production plan	5
Molecular sieve production plan	5
Paper production from calcium carbonate	6
Production of household appliances	6
Production of precious metals, stones and jewels	6
Production of industrial bread and industrial sweets	7
Printing and packaging complex	7
Production of HPL sheets	7
Mobile accessories	9
Processing and production of products based on dates and sesame	9
Production of tissue paper	9
Instant coffee production and packaging plan	10
Production of home and car air conditioner compressors	10
Production of electric motors	10
Barrel making	11
PVC wood profiles using sugar cane factory waste	11
Normal sanitary faucets	11
Bandages and medical gauze production	12
production of fishing nets	12

boiler production	12
Cardboard box	13
Production of carbon paper	13
car air conditioner condenser	13
cold storage production	15
Soda lime glass production plan	15
The production of cells and solar modules	15
Concrete mold release agent production plan	16
Microfiber napkin production plan	16
Fiber board production plan from rice paddy husk	16
Production plan of all kinds of stationery	17
Scalpels and surgical blades production plan	17
Production plan for potato chips and frozen semi-prepared potatoes	17
Hydraulic lift production plan	18
Car lamp production plan	18
Production plan of all kinds of ribbons	18
Car alarm production plan	19
Super absorbent powder production plan	19
Graphite electrode production plan	19
Colostomy bag production plan	21
Energy storage battery production plan	21
Power analyzer production plan	21
Production plan for smart vending machines (vending machines)	22
Barite powder production plan	22
Active harmonic filter production plan	22
Production of perfume and cologne and deodorizing spray cosmetic products	23
Distilled water production plan	23
Blood powder	23
Fish and shrimp processing	24

Dolomite processing including granulation and powder (micronized)	24
Production of glass bottles	24
Wheat starch	25
Oral collagen production plan	25
Production of antitoxin (biological serum)	25

Chemical

Production of plastic wood sheets and doors from agricultural and plastic waste	29
Production of linear alkyl benzene	29
Production of PVC bags	29
Citric acid	30
BOPP and CPP film production	30
hydrogen peroxide	30
Production of printing toner powder	31
Liquid caustic soda	31
Construction plan for tire recycling unit	31
Glycerin	32
Hodak (ammonium persulfate) oil production	32
Sodium metasilicate production plan	32
Alkyd resin production plan	33
Javal water production plan (sodium hypochlorite)	33
Proline mesh production plan	33
Sodium methoxide production plan	35
Sulfonic acid (alkyl benzene sulfonic acid) production plan	35
Production plan of mono di and triethanolamine	35
Hot glue production plan	36
Production of UPVC profiles	36
Polybutylene terephthalate production plan	36
Ceramic slab production plan	37
Production plan for rubber parts	37

Production of concrete plasticizers project	37
Production of urea fertilizer with sulfur coating	38
Composite pipe	38
Geomembrane sheet	38
Industrial carbon black (carbon black) production plan	39
Production plan for silver recovery from film and film emergence solution	39
Mold powder production plan	39
Plan for the production of Styrofoam sheets and parts	40
Production of woven fiberglass adhesive tape	40
Production plan of corrugated sheets from PS or PP	40

Commerce-agriculture

Constructing a 10 000 ton cold storage in Khorramshahr port area	43
Palm grove construction project	43
Growing tomatoes in greenhouse	43

Tourism

Indoor water park	47
Arvand 5-star hotel construction project	47
Recreational beach and reconstruction of the water sports center's boating club (Arvand-e-Saghir)	47
Sports village (including horseriding camping etc.) soccer field tennis court	48
Indoor and outdoor amusement park in Arvand Free Zone	48
Cinema campus and Plateau in Arvand Free Zone	48
Wound clinic	49
Multi-purpose passenger service complex in Shalamchah	49
Chemotherapy center construction project	49
Modern market of fisheries supply	50



Introducing Arvand Free Zone

Arvand commercial-industrial free zone in the north-west of the Persian Gulf and in the south-west of Khuzestan province, including the areas of Abadan, Khorramshahr and Minoushahr (Mino Island) started to operate since 2004. Arvand is the first zone in terms of population and the second free zone of the country in terms of area and one of the largest and most populated free zones in the world. This zone is located in the focal center of untapped markets with a population of over 20 million people in a radius of less than 200 km.

Arvand is the only free zone that has the extraordinary advantage of combined transportation including road, rail, water and air transportation.

Abadan International Airport, Khorramshahr Railway, Shalamchah-Basra Railway, two ports of Khorramshahr and Abadan, Shalamchah Dry Port and numerous transportation roads to the provincial capital and nearby cities, together make Arvand Free Zone the only free zone with combined transportation.

This zone has the largest industrial site in the country's free zones with an area of about 9200 hectares, where nearly 200 industrial units are currently operating. The existence industries such as oil, petrochemical and steel industries are among the industrial advantages in Arvand Free Zone.



Activities in Arvand Free Zone have incentives that can be very attractive for investment in this zone. These components, in addition to being profitable for the investor, can also be effective in providing the feed required for production, product export, and raw material import.

Customs facilities in the free zone is the first incentive that will provide the necessary facilities for exporting products and significantly reduce the cost of exports for the investor in the field of production.

Also, producers and investors can import raw materials and equipment for their production line without paying customs duties and use them in their field of activity.

Manufacturers in free zones are exempted from paying direct tax and income tax for up to 20 years.

Investors pay 10 to 30 percent of the cost of the desired land in installments to build their factory at the lowest possible price, and other costs are paid in installments up to 60 months and are provided to the manufacturing companies.

Expert workforce, water, electricity and gas infrastructure, as well as access to related oil industries such as Abadan Refinery and Abadan Petrochemical, as well as numerous steel industries, have made this region the best place for investment and production.

All permits will be issued in an integrated manner through Arvand Free Zone Organization and investors can start their activities in the zone in the shortest possible time.



Free Zones

Free zones are geographical areas that are often established near borders and customs points with the aim of supporting domestic industry and facilitating import, export and transit of goods, and have more limited rules and simpler customs procedures than the mainland. These areas are outside the scope of many laws of the mainland and due to the facilities, potentials, exemptions and privileges intended for them, they can create a suitable platform for the producers of export goods, traders and transit industry activists.

The main focus in the development of these zones is on encouraging the export of industrial and goods conversion, attracting foreign capital and technologies, strengthening transit channels and reinforcing the country's position in the field of international trade.

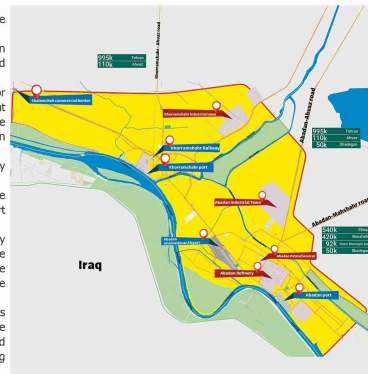
Currently, eight free zones are active in the country, including Imam Khomeini Airport City (RA), Kish, Qeshm, Chabahar, Aras, Mako, Anzali and Arvand.



Advantages of investing in Arvand Free Zone

Legal advantages

- The possibility of acquiring 100% of the shares of foreign companies
- Guarantee of foreign investments in accordance with the Law of Encouraging and Supporting Foreign Investment in Iran
- The possibility of unlimited investment for Iranian and foreign nationals in any amount with the possibility of transferring 100% of the capital and profit from the activities of foreign registered persons abroad.
- 100% tax exemption on income and property for 20 years and renewable
- Free export of manufactured products in the region based on general export and import regulations
- Customs exemption for products produced by industrial units in the region for export to the mainland at the amount of added value in the use of domestic raw materials approved by the Value Added Commission.
- The possibility of exporting the products produced from foreign raw materials in the amount of the allowed percentage determined by the Value Added Commission Ease of issuing visas for foreigners working in the region
- Compliance with labor laws specific to commercial and industrial free zones
- Commercial discounts
- Warehouse discounts
- Discounts on the cost of warehousing export and transit goods from the free zone
- Discounts on customs duties of deprived areas in the ports of the region (25% at Khorramshahr customs and 20% at Abadan customs)
- Discounts on customs duties for goods imported through the region's ports (up to 2% of the region's share of commercial profit)
- The possibility of obtaining a bank guarantee for the import duties
- Exclusive advantages
- Exemption from import duties of machinery and raw materials used by production units
- Issuance of negotiable warehouse receipts and separate warehouse receipts within the region by the organization
- Not abandoning the goods in Arvand free zone warehouses for up to six months
- Strategic geographical location in the neighborhood of Persian Gulf countries and especially access to the markets of Iraq
- Access to natural and mineral resources in Khuzestan province to supply raw materials for industrial units
- The existence of oil, gas, petrochemical, steel, shipbuilding, etc. industries within the region and in Khuzestan province
- The existence of combined transportation (railway, international airport, land, sea and roads)
- Having two chambers of commerce in the zone (Abadan Chamber of Commerce and Khorramshahr Chamber of Commerce)
- Enjoying two Industry, Mine and Trade departments and two guild chambers and more than 20,000 guild units in many fields within the scope
- Having two ports (Abadan and Khorramshahr) in the area with modern and mechanized port equipment
- Possession of specialized customs for fabric import (Khorramshahr customs and Abadan customs) within the region
- The largest export zone in the country
- Deployment of the Islamic Republic of Iran customs administration (IRICA) in industrial sites to facilitate the entry and exit of goods of production units
- The possibility of foreign nationals entering the zone without the need for a visa



Arvand Free Zone, a golden opportunity
for investment, production and export



INDUSTRIAL

**Investment opportunities of
Arvand Free Zone**

WWW.ARVANDFREEZONE.COM

ARVAND FREE ZONE, A GOLDEN OPPORTUNITY
FOR INVESTMENT, PRODUCTION AND EXPORT

1

Production of steel sheet and roof and wall sandwich panels

Today, most of the metal products are produced in the form of steel sheets. By galvanizing this type of sheet, it can be used in the construction industry and also for home appliances. The roof sandwich panel is also a cover for the roof, which prevents water penetration due to the trapezoidal steps and the shape of the overlap. Also, sandwich wall panel is a type of ready-made building material that is used for wall covering and facade. The current design is developed for the purpose of producing the above items. According to the growing trend of the industry in Iran and neighboring countries, the demand for this product will be accompanied by growth.

Fixed capital:	\$ 3.3 million
Working capital:	\$ 1.7 million
Employment:	70 persons
Capital return period:	4 Year
Land:	200,000 Square meters
Internal rate of return:	30 Percent



2

Production of Autoclaved Aerated Concrete (AAC) prefabricated parts sheet and roof and wall sandwich panels

Autoclaved Aerated Concrete (AAC) is one of the construction materials that are used to make building walls, including walls, ceilings, and floors. From a physical point of view, it is solid, inelastic and porous, and its density is lower than water. AAC can be cut and trimmed easily. This type of light concrete is a suitable substitute for common materials used in construction. This product has accelerated the construction, reducing the price, which is one of the most important components of the construction industry.

Fixed capital:	\$ 2.6 million
Working capital:	\$ 0.3 million
Employment:	75 persons
Capital return period:	4 years
Land:	20,000 square meters
Internal rate of return:	25 percent

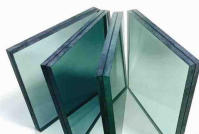


3

Production of tempered glass

The glass that is heated and cooled due to going through a mechanical-thermal process and has high resistance to temperature is called tempered glass. This temperature shock increases the resistance of this glass against pressure and impact. Tempered glass is one of the most resistant glasses used in the construction industry. The purpose of this plan is to produce tempered glass with different thicknesses with a capacity of 300,000 square meters per year.

Fixed capital:	\$ 1.31 million
Working capital:	\$ 0.2 million
Employment:	30 persons
Capital return period:	5 Year
Land:	5,000 Square meters
Internal rate of return:	25 Percent



4

Production of raw Mdf from agricultural waste (Palm tree)

The product of this project is raw MDF used in the production of various prefabricated products, including doors, cabinets, tables and chairs, profiles, flooring, etc. MDF sheet is produced from wood waste, and since the plant fibers targeted in this project are bagasse and palm waste, and due to the presence of palm and bagasse plantations in Khuzestan province, this province has an advantage for establishing an MDF production unit.

Fixed capital:	\$ 17.5 million
Working capital:	\$ 2.5 million
Employment:	120 persons
Capital return period:	2.5 years
Land:	15,000 square meters
Internal rate of return:	38 percent



5

Production of jumbo bags and polypropylene bags

Jumbo bags are flexible bags that are used to carry goods from 500 to 2000 kg and up to 3 cubic meters. Jumbo bags are suitable for carrying all kinds of solid and dry materials that are in the form of powder, granules or flakes. Considering the application of the product of this plan, including the transportation of petrochemical raw materials in solid and dry form, powder, etc., as well as bitumen packaging and the presence of many active units in this field, we can imagine a good market for this product in Arvand Free Zone.

Fixed capital:	\$ 3 million
Working capital:	\$ 0.2 million
Employment:	40 persons
Capital return period:	5.5 Year
Land:	6,000 Square meters
Internal rate of return:	23 Percent



6

Production of wall packages and radiators

The wall package is one of the most common means of creating heat in heating radiators in the whole world. Non-occupation of useful space, high safety and efficiency, optimal fuel consumption and complete independence of residential units fully justify the use of this system in homes and commercial units. For the implementation of this project in Arvand Free Zone, it is possible to supply steel sheet as one of the raw materials required for the project from Kaveh Steel and Khuzestan Steel. Also, the proximity of the project implementation site to Iraq facilitates the export of these products and makes them more competitive.

Fixed capital:	\$ 4 million
Working capital:	\$ 1 million
Employment:	200 persons
Capital return period:	3.5 Year
Land:	15,000 Square meters
Internal rate of return:	29 Percent



7

LED flexible paper production plan

It is a spool of shiny and flexible paper with an amazing length of 24.85 meters and a surface area of 8.69 square meters, which is powered at once by a 24VDC transformer. It is currently the only LED module that uses paper as a base material, with many possible new applications: from the production of classic lights to the furniture industry, the packaging and advertising industry, and countless others.

Fixed capital:	\$ 1 million
Working capital:	\$ 0.1 million
Employment:	16 persons
Capital return period:	3 years
Land:	2500 square meters
internal rate of return:	42 percent



8

Ready-to-eat pasta and lasagna production plan

Ready-to-Eat Pasta and Lasagna is a meal that provides easy reheating and eating options for the person who wants a hassle-free, convenient and nutritious meal. Ready-to-Eat Pasta and Lasagna prep-packages and is produced with all the necessary additives to prepare a tasty food without the need to add anything.

Fixed capital:	\$ 0.5 million
Working capital:	\$ 0.2 million
Employment:	21 persons
Capital return period:	3 years
Land:	2000 square meters
internal rate of return:	40 percent



9

Molecular sieve production plan

Molecular Sieve is one of the chemical materials with permeable pores, which makes this material capable of absorbing moisture. The pores of this chemical have a constant size. They are very small and not easily seen. Due to the small pores of this material, large molecules cannot pass through it and only smaller particles can pass through it.

Fixed capital:	\$ 1 million
Working capital:	\$ 0.2 million
Employment:	26 persons
Capital return period:	3 years
Land:	4000 square meters
internal rate of return:	40 percent



10

Paper production from calcium carbonate

Paper production from lime or stone in Iran is an emerging industry that preserves water resources and the environment. Nowadays, the increasing consumption of paper in the country and the consequent excessive pressure on the forests and the environment in the world has become a proof of the financial burden on the governments, that attention and effort should be paid to saving and modifying the pattern of paper production to moderate the trend. Extreme uses and contrary to the goals of sustainable development are necessary. The purpose of this plan is to build a calcium carbonate paper factory with a capacity of 10,000 tons per year.

Fixed capital:	\$ 3.5 million
Working capital:	\$ 1 million
Employment:	60 persons
Capital return period:	3 Year
Land:	5,000 Square meters
internal rate of return:	33 Percent



11

Production of household appliances

After the automobile industry, the home appliance industry has the largest employment generation in the world. The aim of this plan is to produce all kinds of household appliances with a capacity of 50,000 units per year. The implementation of this project in Arvand Free Zone is very economical because some equipment and separate parts required for the products of this project, such as household appliance motors, compressors, etc., can be supplied by using exemption from customs duties through imports.

Fixed capital:	\$ 1 million
Working capital:	\$ 1 million
Employment:	100 Persons
Capital return period:	2 Year
Land:	10,000 Square meters
internal rate of return:	45 Percent



12

Production of precious metals, stones and jewels

The names of precious and semi-precious stones are usually used for a group of minerals that distinguish them from other stones by having some characteristics. The added value of processed precious stones is up to seven times the price of raw stone and semi-precious stones up to three times the price of their raw stone. The Persian Gulf countries and especially Iraq are among the top ranks in terms of importing precious and semi-precious stones in the world. Therefore, we can imagine a suitable position in the field of export of ornamental artifacts to these countries and also the transit of these products to Syria.

Fixed capital:	\$ 2 million
Working capital:	\$ 1 million
Employment:	80 Persons
Capital return period:	3 Year
Land:	1500 Square meters
internal rate of return:	40 Percent



13

Production of industrial bread and industrial sweets

Industrial bread is called bread that is produced in mass volume from the beginning of the production line, when the flour enters the system, until the end, when the packaging is done. Cereals have the largest share in the food basket of human societies. Meanwhile, wheat is very important in terms of having its special properties that can be converted into bread. Considering that even today, the main strength of Iranians is bread and its consumption is increasing day by day due to population growth, the implementation of this plan is completely justified in terms of economic indicators.

Fixed capital: \$ 6 million
Working capital: \$ 0.5 million
Employment: 75 Persons
Capital return period: 2.5 Year
Land: 6,000 Square meters
internal rate of return: 38 Percent



14

Printing and packaging complex

Today, packaging is considered as an important, effective and competitive tool in generating income and increasing exports, and it is known as a tool to communicate with consumers. The potential in Iraq can make Iran the main player in the trade of packaging and printing products. Also, the use of modern design and appropriate packaging as a meta-industry can stimulate Iran's exports to Iraq.

Fixed capital: \$ 3 million
Working capital: \$ 1 million
Employment: 50 Persons
Capital return period: 2.5 Year
Land: 10,000 Square meters
internal rate of return: 40 Percent



15

Production of HPL sheets

HPL (HPL) stands for High Pressure Laminate. It is a sheet with various other designs that is created from the combination of cellulose layers and phenolic resins. This product with unique properties is widely used for making decor, building facades, swimming pool lockers and lockers in factories and other places where durability and strength are important along with beauty.

Fixed capital: \$ 4 million
Working capital: \$ 0.5 million
Employment: 140 Persons
Capital return period: 5 Year
Land: 20,000 Square meters
internal rate of return: 23 Percent



16

Mobile accessories

Today, one of the most important devices needed by every person is a mobile phone, the charging cable for mobile phones is one of the most important accessories, and the types of models are different according to the type of mobile phone, the most important models of which include: Lightning model (Lightening, Micro USB, USB type C, mobile cables have 4 internal strands, two of which are responsible for data transmission and the other two are for power.

Fixed capital: \$ 0.5 million
Working capital: \$ 0.2 million
Employment: 30 persons
Capital return period: 3.5 years
Land: 5,000 square meters.
Internal rate of return: 28 Percent



17

Processing and production of products based on dates and sesame

Transformation and complementary industries of the agricultural sector are industries that deal with plant and animal processing and processing (agricultural, horticultural, fishery, livestock and poultry, forest and pasture). Dates are a fruit with high nutritional value from which many food products are processed. Sesame also has a special place as a nutritious ingredient as breakfast and snack. In the past, dates were traditionally produced and sold in the region, but in this project, special attention has been paid to the issue of packaging in an industrial and modern way. The products of this plan have a good domestic and foreign market.

Fixed capital: \$ 3 million
Working capital: \$ 0.5 million
Employment: 84 persons
Capital return period: 2.5 Year
Land: 10,000 Square meters
Internal rate of return: 40 Percent



18

Production of tissue paper

Tissue paper is actually the same paper napkin before cutting and has a standard weight of 14-16 grams per square meter. Tissue paper is used to turn into paper napkins, paper towels, toilet paper, table napkins, etc. Considering the increasing use of low-end products of this paper, considering the rising level of society's culture and hygiene, the need for tissue paper, which is the main raw material for the production of these products, seems necessary. The aim of this plan is to build a tissue paper factory with a capacity of 25,000 tons per year.

Fixed capital: \$ 6 million
Working capital: \$ 3 million
Employment: 70 persons
Capital return period: 5 Year
Land: 15,000 Square meters
Internal rate of return: 25 Percent



19

Instant coffee production and packaging plan

Coffee, as one of the favorite drinks of man, has been used for many years and it can be said that it is used in all regions of the world today. Coffee trade is the second largest trade in the world after oil. The coffee industry includes the cultivation, processing, distribution and sale of coffee beans and coffee-related products. With increasing demand for high-quality coffee beans, there is potential for Iran to expand its exports to other countries.

Fixed capital: \$ 1 million
Working capital: \$ 0.2 million
Employment: 39 persons
Capital return period: 3 years
Land: 5,000 square meters
Internal rate of return: 40 percent



20

Production of home and car air conditioner compressors

In recent years, a significant part of the country's need for air conditioner compressors is provided through imports. With the expansion of the automotive industry, the need for spare parts for cars is clearly tangible. The purpose of this plan is to build an air conditioner compressor production unit with a capacity of 500,000 units per year. With the use of the said project, in addition to meeting the domestic needs, due to the location of the project and its proximity to the countries of the Persian Gulf, we can have a partial view on the export of this product, so that in addition to preventing capital flight, it can also earn foreign currency.

Fixed capital: \$ 4 million
Working capital: \$ 0.5 million
Employment: 80 persons
Capital return period: 5/5 years
Land: 20,000 square meters
Internal rate of return: 30 percent



21

Production of electric motors

Electric motors are a group of electrical equipment that convert electrical energy into mechanical energy based on the relationship between electric currents and magnetic fields. During this process, some energy is lost. Due to this, the quality of the construction of these equipment is very important to reach the maximum economic efficiency, and as a result, the manufacturers of these equipment can play a very important role in reducing the consumption and losses of electrical energy. The purpose of this plan is to build a factory for the production of electric motors with a capacity of 2000 units. It is necessary to plan to reduce energy consumption in the country by producing high efficiency electric motors in the country.

Fixed capital: \$ 1.5 million
Working capital: \$ 0.2 million
Employment: 35 persons
Capital return period: 4.5 Year
Land: 5,000 Square meters
Internal rate of return: 30 percent



22

Barrel making

Metal barrels are containers used for packing and transporting liquid materials. Metal barrels are the most important and reliable packaging for transporting and storing dangerous (flammable) materials. These barrels have the highest reliability factor for the stability of materials and products and have high strength for long-term storage of materials. The purpose of building this factory is to produce metal barrels for the purpose of transporting and exporting all kinds of petroleum products and bitumen and paint concentrate units. In addition to job creation, this plan is justified due to the lack of exchange rate and supply of all machinery and raw materials inside the country.

Fixed capital: \$ 1 million
Working capital: \$ 0.2 million
Employment: 40 persons
Capital return period: 3 Year
Land: 5,000 Square meters
Internal rate of return: 29 percent



23

PVC wood profiles using sugar cane factory waste

Agricultural wastes such as wood waste, rice husks, bagasse, straw, sawdust, etc., almost like plastic materials, cannot be easily decomposed and remain in the environment in a solid and indestructible form, causing adverse environmental, health and economic problems. In order to reduce the environmental problems caused by the disposal of such wastes and reuse them to produce products with high added value and can be recycled again, it is suggested to prepare a composite from a mixture of plastic wastes and agricultural fibers (bagasse). The products produced from these composites are used in various sectors such as construction, automotive (interior decoration), decoration, railway, shipbuilding (deck), etc.

Fixed capital: \$ 0.5 million
Working capital: \$ 0.2 million
Employment: 40 persons
Capital return period: 3 years
Land: 20,000 square meters
Internal rate of return: 30 percent



24

Normal sanitary faucets

Sanitary faucets are one of the main items used in buildings, which due to the increase in population and the consequent increase in construction in the country, the implementation of the law on the targeting of subsidies and the increase in energy costs, as well as the increase in society's awareness indicate an increase in the demand for this product.

Fixed capital: \$ 1 million
Working capital: \$ 0.2 million
Employment: 30 persons
Capital return period: 3 years
Land: 10,000 square meters
Internal rate of return: 30 percent



25

Bandages and medical gauze production

The products that are marketed under the name of bandages and medical gauze are divided into three main categories: sterile, non-sterile and oily. All types of bandages and medical gauze have a simple texture (taffeta) and the density of the thread is 12 and the density of the weft is 8. The material of these products is 100% cotton. The yarn fibers used in the fabric used in the production of bandages and gauze must be natural and pure cotton, and no artificial fibers should be used in it, even in small amounts. Amount of fixed capital: 210,000 million Rials

Fixed capital: \$ 0.5 million
Working capital: \$ 0.2 million
Employment: 20 persons
Capital return period: 3.8 years
Land: 10,000 square meters
Internal rate of return: 28 percent



26

production of fishing nets

There are various types of fishing nets, it is one of the types of fishing nets without knots that are produced in the Rachel weaving system. The fishing net was one of the first means of hunting aquatic animals that humans used. Considering the potential of the region and the presence of fishermen in the region, it is widely used in the fishing industry and the tools used by fishermen in the region.

Fixed capital: \$ 0.7 million
Working capital: \$ 0.2 million
Employment: 10 persons
Capital return period: 4 years
Land: 10,000 square meters
Internal rate of return: 24 percent



27

boiler production

A steam boiler or boiler is a closed tank in which water vapor is produced for use outside of it by the heat caused by fuel combustion. Inside the steam boiler, there are two parts: the fire side and the water side. The heat level of the boiler refers to the sum of all levels on the fire side of the boiler. All internal and pressure parts of a boiler are made of iron alloys.

Fixed capital: \$ 0.5 million
Working capital: \$ 0.5 million
Employment: 50 persons
Capital return period: 3 years
Land: 6,000 square meters
Internal rate of return: 34 percent



28

Cardboard box

Cardboard is a type of paper product that is made from the combination of paper sheets and is widely used in packaging. Carton is usually made of three layers of paper, two layers above and below are flat sheets and a middle layer of corrugated paper.

Fixed capital: \$ 0.3 million
Working capital: \$ 0.2 million
Employment: 20 persons
Capital return period: 4 years
Land: 4,000 square meters
Internal rate of return: 24 percent



29

Production of carbon paper

Carbonless paper is a type of paper without carbon. This paper has replaced carbon paper in use for copying invoices. This paper is produced in three layers, and in the lower part there are ink capsules that open automatically and copy the text. There is no carbon in your appearance. They work like carbon, but with the difference that they don't ink the bottom sheet, and it saves paper consumption.

Fixed capital: \$ 0.3 million
Working capital: \$ 0.2 million
Employment: 30 persons
Capital return period: 4 years
Land: 4,000 square meters
Internal rate of return: 27 percent

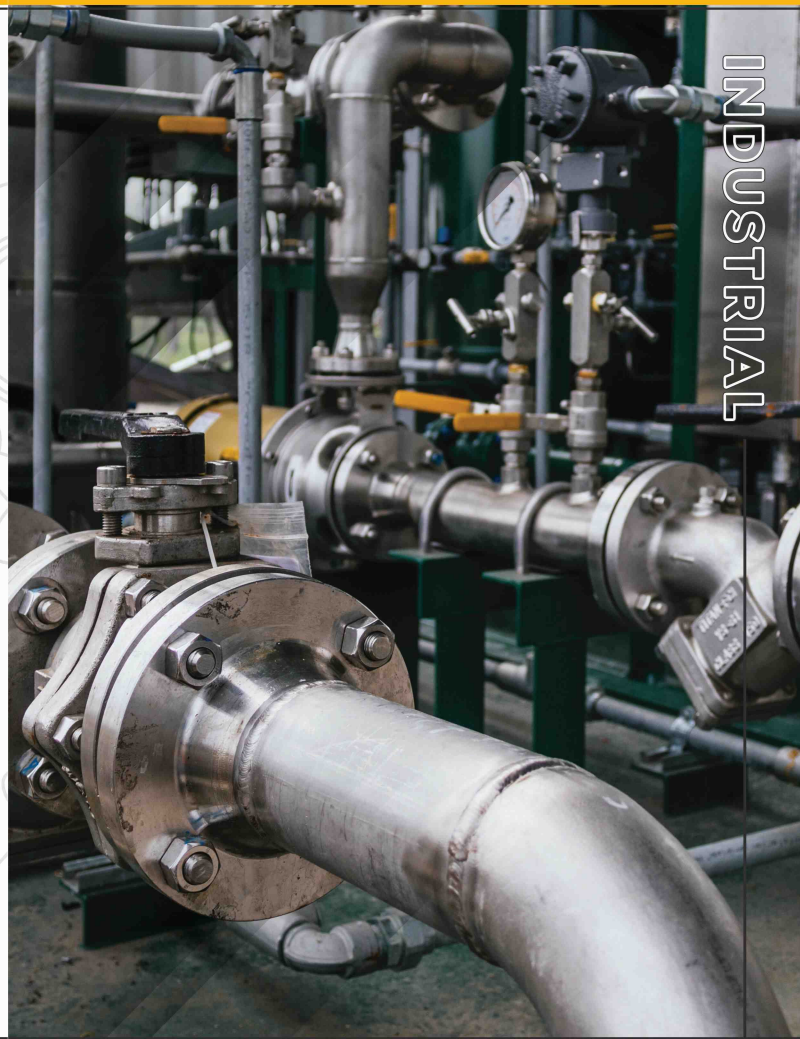


30

car air conditioner condenser

The condenser of the car air conditioner, which is another name for the distilling device, is used in different industries to change the phase of fluids from heating or gaseous to liquid and by cooling it, that is, to take the heat of hot gaseous fluid. In fact, the function of the condenser is to take heat from the vapor state, which will do this with a high temperature. It does this with the help of another fluid such as air or water or any other cooling fluid.

Fixed capital: \$ 0.5 million
Working capital: \$ 0.7 million
Employment: 40 persons
Capital return period: 3 years
Land: 5,000 square meters
Internal rate of return: 33 percent



31 cold storage production

One of the inseparable parts of the food industry is undoubtedly the cold store. Without cold storage, fruit, meat and other food items will not last long and will spoil. Just as the presence of a refrigerator is considered a necessity for the home, in the food industry, the presence of a cold store is an important and main necessity.

Fixed capital:	\$ 0.5 million
Working capital:	\$ 0.3 million
Employment:	30 persons
Capital return period:	3 years
Land:	3,000 square meters
Internal rate of return:	35 percent



32 Soda lime glass production plan

Soda lime glass is the most common and widely used type of glass. More than 95% of the total amount of glass produced in the world is soda lime glass. Building door and window glass, car glass, bottles and many other everyday glass products are made of soda lime glass. Laboratory glasses are also known as soda lime glass. The reason why these glasses are known as soda lime is that the material and compounds of these glasses are calcium carbonate or soda lime.

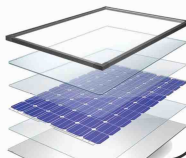
Fixed capital:	\$ 3 million
Working capital:	\$ 0.5 million
Employment:	60 persons
Capital return period:	3 years
Land:	15,000 square meters
Internal rate of return:	34 percent



33 The production of cells and solar modules

Solar Cell or Photovoltaic Cell (PV Cell) consists of pieces of a semiconductor with electrical connection. This piece absorbs solar energy and converts it into electrical energy. The growth of the global consumption of solar cells is very fast. The amount of solar energy needed until 2030 and the share of silicon-based cells in this market is estimated at 37%.

Fixed capital:	\$ 1 million
Working capital:	\$ 0.2 million
Employment:	67 persons
Capital return period:	3 years
Land:	6,000 square meters
Internal rate of return:	33 percent



34 Concrete mold release agent production plan

The mold release agent is used in the implementation of concrete structures on metal, rubber and wooden molds and increases the speed, ease and cleanliness in the work of opening the molds. There are different types of release agents. One of the most important and influential parts related to the implementation of concrete structures is molding.

Fixed capital:	\$ 0.2 million
Working capital:	\$ 0.1 million
Employment:	21 persons
Capital return period:	3 years
Land:	1,500 square meters
Internal rate of return:	37 percent



35 Microfiber napkin production plan

Microfiber napkins are one of the new products that have been very popular among us Iranians in recent years. Working with these versatile wipes is much easier than other conventional wipes. Microfiber cloth has various uses and can be used to clean steel dishes, cabinets, granite and marble counters, chrome items, mirrors and windows, bathtubs and dusting.

Fixed capital:	\$ 0.2 million
Working capital:	\$ 0.1 million
Employment:	32 persons
Capital return period:	4 years
Land:	2,500 square meters
Internal rate of return:	35 percent



36 Fiber board production plan from rice paddy husk

Rice husk is considered as a suitable raw material for the production of compact boards with waterproof properties. The record of producing fiber board and chipboard from rice husk is not more than 25 years. Compared to wood, fiber board and paddy shell chipboard have favorable characteristics, which has caused them to be proposed as an alternative in many construction applications. These features include resistance to damage, high resistance to destruction, resistance to fire, high resistance to moisture, high durability, excellent mechanical properties such as internal bonding power, elastic properties, dimensional stability, nailability, screwability, high resistance to Abrasion, surface hardness and sound insulation are desirable.

Fixed capital:	\$ 1 million
Working capital:	\$ 0.2 million
Employment:	39 persons
Capital return period:	3 years
Land:	5,000 square meters
Internal rate of return:	37 percent



37 Production plan of all kinds of stationery

Today, one of the most important human needs to transfer data is to write and leave a mark. Therefore, one of the most important daily needs of today's society is writing. Writing accessories are of various types and are of different categories such as art supplies, calligraphy supplies, etc. The products of the stationery production industry are a global industry that includes the production and distribution of various items such as paper, writing instruments, office supplies and other related products.

Fixed capital:	\$ 0.6 million
Working capital:	\$ 0.2 million
Employment:	49 persons
Capital return period:	3 years
Land:	5,000 square meters
Internal rate of return:	45 percent



38 Scalpels and surgical blades production plan

Scalpels, scissors, surgical blades, and cutting tools have sharp edges. They are used to cut, separate or cut tissues. A surgical blade is a sharp instrument used in surgical procedures to make cuts or holes in tissue. They are usually made of high quality stainless steel and come in a variety of shapes and sizes depending on the specific surgical procedure being performed.

Fixed capital:	\$ 0.2 million
Working capital:	\$ 0.1 million
Employment:	16 persons
Capital return period:	3 years
Land:	2,000 square meters
Internal rate of return:	44 percent



39 Production plan for potato chips and frozen semi-prepared potatoes

Potato Chips The term fried potato products mainly refers to chips and French fries (Khalal Sokhari in Farsi). Potato chips have nutritional uses as a supplement to meat dishes, but they are mainly used as snacks. Chips are fried in oil with a moisture content of 2%. They are light yellow in color with a good taste and crispy texture. In addition, the chips must have less than 15% blisters, less than 10% minor defects, and less than 5% major defects. It should also be between 32-40%.

Fixed capital:	\$ 0.7 million
Working capital:	\$ 0.2 million
Employment:	39 persons
Capital return period:	3 years
Land:	3,500 square meters
Internal rate of return:	39 percent



40 Hydraulic lift production plan

A hydraulic lift is a type of lift that uses hydraulic power. Hydraulic lift is one of the best-selling types of lift in Iran, among which we can refer to household hydraulic lift, shop hydraulic lift, warehouse hydraulic lift, person lift, hydraulic wheelchair lift, industrial hydraulic lift, etc.

Fixed capital:	\$ 0.5 million
Working capital:	\$ 0.2 million
Employment:	22 persons
Capital return period:	3 years
Land:	2,500 square meters
Internal rate of return:	34 percent



41 Car lamp production plan

Car lights and lamps have been one of the most attractive parts of car design from the past to today. In addition to its operational function, car lighting system also has aesthetic applications in car design. These days, with the development of various types of light bulbs that are used in car lights, you will have the right to various choices to make changes in improving your car lighting system as a new option.

Fixed capital:	\$ 3.5 million
Working capital:	\$ 0.7 million
Employment:	70 persons
Capital return period:	3 years
Land:	12,000 square meters
Internal rate of return:	39 percent



42 Production plan of all kinds of ribbons

A ribbon is a thin strip of material such as fabric, metal or plastic, which primarily has ornamental applications and is widely used in packaging. Ribbon is a fabric that is made of natural materials such as silk, velvet, cotton, hemp, as well as artificial materials such as polyester, nylon and polypropylene. Ribbons are used for countless decorative and symbolic purposes. Different cultures around the world use ribbons for different purposes such as hair and other parts of the body to decoration (ornament) of animals, buildings and packaging. Satin, silk, and velvet are among the popular fabrics used to make ribbons.

Fixed capital:	\$ 0.2 million
Working capital:	\$ 0.2 million
Employment:	18 persons
Capital return period:	4 years
Land:	1,500 square meters
Internal rate of return:	31 percent





43

Car alarm production plan

Car alarm is an electronic device that is in the category of car security equipment. And it is used for car anti-theft. It is a security system that includes a number of sensors and sirens for alarms when the sensors are activated. Car alarm is not a new concept, but what makes this device remarkable is the impact of technology that has made this simple device become a complete security system.

Fixed capital: \$ 0.2 million
Working capital: \$ 0.1 million
Employment: 20 persons
Capital return period: 3 years
Land: 2,500 square meters
Internal rate of return: 40 percent



44

Super absorbent powder production plan

The superabsorbent is based on potassium and has the ability to absorb water moisture with an absorption power of 200 to 500 times its own weight or 30 to 60 times its volume. These materials do not contain any toxic substances for humans and thus they are used in health and food products. Super absorbents are used in their packaging in order to absorb moisture from the environment and prevent spoilage or rusting of goods. The method of using these materials in the packaging of goods is that the super absorbent is placed in a small package next to the goods and in its packaging.

Fixed capital: \$ 6 million
Working capital: \$ 1.5 million
Employment: 38 persons
Capital return period: 4 years
Land: 10,000 square meters
Internal rate of return: 32 percent



45

Graphite electrode production plan

This plan consists of three main stages. In the first stage, some sand and coke that has been eaten and sifted is mixed with molten bitumen, and the molding and combination of materials is compressed by a vibrator. In the second step, the formed electrode is baked in the oven. Then a coating of bitumen is added to it and baked again. In the third stage, the carbon of the electrode is converted to graphite at a temperature of 3000 degrees Celsius. Then it is turned into a cylindrical shape in the desired diameter by turning and finally a pin is installed as a socket on the head of the electrode.

Fixed capital: \$ 150 million
Working capital: \$ 3 million
Employment: 100 persons
Capital return period: 3 years
Land: 25,000 square meters
Internal rate of return: 45 percent





46

Colostomy bag production plan

An ostomy bag system or colostomy bag is a medical device in the form of an artificial organ that carries feces and body waste out of the body through a surgically diverted biological system (colon, end of small intestine, bladder) and creating a stoma. Four types of colostomy are named according to the location of dissection in the large intestine: ascending colostomy, transverse colostomy, descending colostomy and sigmoid colostomy.

Fixed capital: \$ 1 million
Working capital: \$ 0.2 million
Employment: 24 persons
Capital return period: 3 years
Land: 3,500 square meters
Internal rate of return: 41 percent

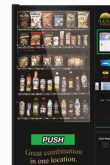


49

Production plan for smart vending machines (vending machines)

The automatic vending machine is a type of service provider machine that automatically provides food and supplies needed by the customer in exchange for money. The automatic vending machine with the Vending brand is used to sell various items such as ice cream, water, pizza, food, tickets, books, newspapers, cigarettes, coffee and cappuccino.

Fixed capital: \$ 0.4 million
Working capital: \$ 0.1 million
Employment: 18 persons
Capital return period: 3 years
Land: 1,500 square meters
Internal rate of return: 36 percent



47

Energy storage battery production plan

Energy cannot be produced or destroyed, but it can be stored in different ways. One of the storage methods is to store chemical energy in a battery. Electricity can be produced by connecting a battery to a circuit. If you pay attention to a battery, you will see that it has two ends called positive and negative poles. If we connect two poles by a wire, we can make a circuit. Electrons pass through the wire and generate electricity.

Fixed capital: \$ 1.5 million
Working capital: \$ 0.2 million
Employment: 60 persons
Capital return period: 4 years
Land: 10,000 square meters
Internal rate of return: 35 percent



50

Barite powder production plan

Barite is a material that is widely used in the preparation of drilling mud. Compared to other industrial projects, the production of this product does not require high investment and has a good yield. This material is also used for the production of other chemicals containing barium, especially barium carbonate, which is used for the production of LED glass for TV, computer screens and for Dielectrics are used.

Fixed capital: \$ 0.4 million
Working capital: \$ 0.1 million
Employment: 10 persons
Capital return period: 3 years
Land: 4,000 square meters
Internal rate of return: 35 percent



48

Power analyzer production plan

Power Analyzer (NEMO96 HD+) is a device that accurately measures the power characteristics of electricity generation, conversion and change devices. In general, this device is used in various industries, including locating, debugging, predicting and preventing possible problems in distribution and transmission networks, using in data processing companies, companies that have sensitive servers, industrial electricity operators, Reactive load estimation, active network, is a unique tool for network analysis, large factories, small workshops, commercial consumers and stores, residential and commercial complexes, hospitals and single-phase power transformer testing, etc.

Fixed capital: \$ 1.5 million
Working capital: \$ 0.6 million
Employment: 62 persons
Capital return period: 4 years
Land: 12,000 square meters
Internal rate of return: 33 percent



51

Active harmonic filter production plan

EMI FILTER, EMI noise filter or harmonic filter is an electromagnetic interface device that is used to eliminate electrical noise whose frequency may be higher than the AC input frequency. EMI or electromagnetic interference are known as unwanted electronic signals that are generated in various ways (for example, from the power supply) and propagated in the system.

Fixed capital: \$ 1 million
Working capital: \$ 0.2 million
Employment: 60 persons
Capital return period: 3 years
Land: 8,000 square meters
Internal rate of return: 39 percent



52

Production of perfume and cologne and deodorizing spray, cosmetic products

The purpose of this plan is to build a factory for the production of cosmetic products, including perfume, cologne, deodorizing spray, and cosmetic products with a total capacity of 5,000,000 pieces per year. Considering the major share of cosmetics and health products in the market, the share of domestic producers in this industry is insignificant. On the other hand, the increasing tendency to consume these products in the country has put the problem of smuggling and counterfeit brands in front of the sellers and consumers of these products and has also caused capital flight.

Fixed capital:	\$ 4 million
Working capital:	\$ 1.2 million
Employment:	100 persons
Capital return period:	2 years
Land:	5,000 square meters
Internal rate of return:	45 percent



53

Distilled water production plan

Distilled water is produced through the distillation process and it is a type of water whose pollutants and minerals have been completely removed. Basically, the distillation process is used to separate the impurities in the water to obtain pure water. Distilled water is the first choice of laboratories and pharmacies due to its high purity. The water distiller removes 99.9% of dissolved minerals, bacteria and chemicals from water. Pure distilled water in three ways it is produced by distillation, deionization and reverse osmosis.

Fixed capital:	\$ 0.2 million
Working capital:	\$ 0.1 million
Employment:	9 persons
Capital return period:	3 years
Land:	1,500 square meters
Internal rate of return:	35 percent



54

Blood powder

Slaughterhouse blood is a product that can play an important role in both the agricultural and livestock economy and the environment. The industrial birth of this product will be in the form of recycling. Failure to pay attention to this issue and due to the presence of high nitrogen in the blood will cause the spread of disease and also changes in the ecosystem. One of the main uses of blood powder is for livestock and poultry feed because the protein of this product is about 70% and it is used to provide protein for livestock and poultry. Another use of this powder is as plant fertilizer.

Fixed capital:	\$ 0.3 million
Working capital:	\$ 0.1 million
Employment:	20 persons
Capital return period:	3 years
Land:	3,000 square meters
Internal rate of return:	32 percent



55

Fish and shrimp processing

Processing refers to a set of activities in which fish or shrimp, after being washed and prepared, are packaged fresh, frozen or cooked, whole or gutted, peeled, filleted, steak, etc. The products of this project are produced and supplied in two forms: raw and processed fish and shrimp products. Arvand Free Zone has a high potential due to easy access to fish and shrimp production resources, having a suitable space for building a complex and being close to the markets of neighboring countries in this field.

Fixed capital:	\$ 1.8 million
Working capital:	\$ 2.5 million
Employment:	55 persons
Capital return period:	4 years
Land:	7,000 square meters
Internal rate of return:	32 percent



56

Dolomite processing including granulation and powder (micronized)

Dolomite mineral with the chemical formula $\text{CaMg}(\text{CO}_3)$ is mostly found in cream-gray and gray-white colors. The constituent elements of dolomite are mainly magnesium oxide (MgO) and lime (CaO). Double carbonate of calcium and magnesium or dolomite 2 (CO_3) CaMg is used in the electrode industry, glass drilling, glazing, and brake pads in metal melting units as insulation bricks for the body of blast furnaces and as facing stones.

Fixed capital:	\$ 0.5 million
Working capital:	\$ 0.7 million
Employment:	35 persons
Capital return period:	3 years
Land:	5,000 square meters
Internal rate of return:	35 percent



57

Production of glass bottles

Today, glass bottles have many medicinal, health, cosmetic, chemical and food uses. These bottles are available in different sizes and shapes. In this project, the goal is to produce bottles for packaging all kinds of beverages. Considering the many uses of this product in the food and beverage industries, the disadvantages of substitute goods, the possibility of exporting the product due to higher quality, the availability of sources of raw materials in the country, and the production of ultra-light bottles using new technology, there is a need to construction of this industrial unit is felt.

Fixed capital:	\$ 30 million
Working capital:	\$ 0.5 million
Employment:	130 persons
Capital return period:	5 years
Land:	100,000 square meters
Internal rate of return:	25 percent



58

Wheat starch

It is a simple starch extracted from the processed endosperm of wheat grain. Its processing is done through a special solution of water and starch. During this process, the proteins are removed. Note that this compound no longer gives any elasticity to the dough and can only be used as a thickener. The most common use of wheat starch is in the materials and products available in households, bakeries, restaurants, schools, offices and supermarkets.

Fixed capital:	\$ 0.6 million
Working capital:	\$ 0.7 million
Employment:	45 persons
Capital return period:	3 years
Land:	7,000 square meters
Internal rate of return:	35 percent



59

Oral collagen production plan

Collagen which is derived from the Greek word colla meaning glue, is a hard, insoluble and fibrous protein that is one of the most abundant proteins in the body and makes up about a third of its total proteins. Due to human needs and aging, the collagen production required for the strength of bones, tissues and skin in your body decreases, in which case you can use edible collagen.

Fixed capital:	\$ 1 million
Working capital:	\$ 0.1 million
Employment:	20 persons
Capital return period:	3 years
Land:	2,500 square meters
Internal rate of return:	40 percent



60

Production of antitoxin
(biological serum)

Antitoxins are antibodies that are each prescribed to specifically neutralize different types of toxins. Before using any type of antitoxin, the patient's allergic reaction must be tested. All antitoxins can have side effects such as anaphylactic shock, hypotension, urticaria, respiratory distress, and serum sickness; therefore, drug sensitivity tests should be done before using it.

Fixed capital:	\$ 0.2 million
Working capital:	\$ 0.5 million
Employment:	35 persons
Capital return period:	3 years
Land:	5,000 square meters
Internal rate of return:	30 percent





Chemical



**Investment opportunities of
Arvand Free Zone**

WWW.ARVANDFREEZONE.COM

ARVAND FREE ZONE, A GOLDEN OPPORTUNITY
FOR INVESTMENT, PRODUCTION AND EXPORT

61

Production of plastic wood sheets and doors from agricultural and plastic waste

In recent years, many efforts have been made in the direction of making multi-structure materials based on the use of wood waste and renewable resources, including natural fibers. One of these products is plastic wood products, which are made by mixing thermoplastic and thermosetting polymers with wood flour or other lignocellulosic fibers. The use of non-consumable lignocellulosic wastes, in addition to helping to protect forests, also has the double advantage of using non-degradable biodegradable plastic materials. The product of this design is wood-plastic sheet used in the production of various prefabricated wood-plastic products, including house doors, cabinet doors, tables and chairs, profiles, flooring, etc.

Fixed capital:	\$ 1.5 million
Working capital:	\$ 1 million
Employment:	47 persons
Capital return period:	2 years
Land:	5,000 square meters
Internal rate of return:	45 percent



62

Production of linear alkyl benzene

Linear alkyl benzene (LAB) is widely used in detergent production industries due to its good degradability in the environment. After sulfonation, linear alkyl benzene is converted into sulfonic acid benzene acid (LABSA) in downstream units and is used as a cleaning agent in liquid detergents and hand and machine washing powders. Linear alkyl benzene is the raw material for the production of sanitary detergents and the production of alkyl benzene sulfone.

Fixed capital:	\$ 11 million
Working capital:	\$ 0.5 million
Employment:	130 persons
Capital return period:	5 years
Land:	100,000 square meters
Internal rate of return:	23 percent



63

Production of PVC bags

Most thermoplastic chemicals in the medical equipment industry are made of PVC. These materials have demonstrated their ability to meet the requirements of the healthcare industry over a period of 50 years. In the past decades, glass or rubber was used in many medical instruments and containers, but with the discovery of PVC, most of the medical instruments were gradually made and produced using this material, so that today the market of medical instruments is in the hands of PVC materials. The purpose of this plan is to build a unit for the production of blood storage bags and urine bags with a capacity of 2,000,000 units per year.

Fixed capital:	\$ 2.4 million
Working capital:	\$ 0.2 million
Employment:	65 persons
Capital return period:	3.5 years
Land:	10,000 square meters
Internal rate of return:	28 percent



64

Citric acid

Citric acid or lemon essence is one of the organic acids with the chemical formula C₆H₈O₇. More than two million tons of citric acid are produced in the world every year. This substance is widely used as a sour and flavoring agent. One of the simplest methods used for its production is the use of *Aspergillus niger* fungus. More than 50% is used as an acidity regulator in beverages, about 20% in other food applications, 20% for detergents, and 10% for other purposes than food, such as cosmetics, pharmaceuticals, and in the chemical industry.

Fixed capital:	\$ 1.8 million
Working capital:	\$ 0.2 million
Employment:	40 persons
Capital return period:	4 years
Land:	30,000 square meters
Internal rate of return:	25 percent



65

BOPP and CPP film production

Polypropylene is one of the most widely used and essential polymers in the world. In general, the film is a very thin layer of liquid or solid, and what is meant by polypropylene film is a thin layer of it that has a solid state. The main use of polypropylene films is in the production of flexible packaging such as chips, snacks, biscuits, ice cream, pasta and the like. The purpose of this plan is to build a BOPP film and CPP film production unit with a capacity of 30,000 tons per year.

Fixed capital:	\$ 15 million
Working capital:	\$ 3 million
Employment:	95 persons
Capital return period:	4.5 years
Land:	7,000 square meters
Internal rate of return:	25 percent



66

hydrogen peroxide

Hydrogen peroxide (H₂O₂) is a colorless and odorless liquid, it has a bitter taste and is slightly acidic. It is a strong oxidizing liquid that is used as a bleach. Hydrogen peroxide is the simplest peroxide. Oxygenated water can also be used to wash and disinfect surface wounds. Also, this substance is an alternative to other chemical bleaches that are used to whiten clothes, treat foot fungus, wash gums and mouth, clean swimming pools, clean houses, etc. This product has a special domestic market due to the various industries producing detergents.

Fixed capital:	\$ 1 million
Working capital:	\$ 0.5 million
Employment:	60 persons
Capital return period:	3.3 years
Land:	20,000 square meters
Internal rate of return:	31 percent



67

Production of printing toner powder

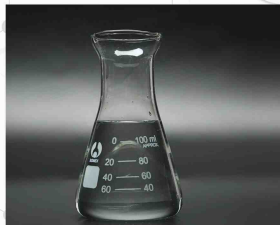
Toner is a special powder with high compression and concentration, which is used to charge color and black and white laser printer cartridges. In general, the main components of toner powder include: carbon powder and polymer compounds (polyester, resin). The purpose of the current plan is to build a factory to produce all kinds of color toners for charging printer cartridges. Based on this, the production capacity of all kinds of toners is considered to be about 500 tons. Considering that the raw materials required for the products of the present project are from the products of refineries and petrochemicals, therefore, the construction of the project in the free zone of Arvand makes access to the raw materials of the project easier.

Fixed capital:	\$ 3 million
Working capital:	\$ 0.5 million
Employment:	25 persons
Capital return period:	4.5 years
Land:	4,000 square meters
Internal rate of return:	25 percent



68

Liquid caustic soda



50% liquid soda is a type of alkaline salt with high consumption in different industries. Liquid soda is a chemical substance that is a petrochemical product and is required by many manufacturing and service industries. The primary ingredient in the production of liquid soda is salt, which is converted into caustic soda during a chemical process. Liquid soda is the best degreasing and de-scaling agent, which is widely used in the production of detergents and cleaners and de-scaling agents.

Fixed capital:	\$ 1.5 million
Working capital:	\$ 0.2 million
Employment:	30 persons
Capital return period:	4 years
Land:	15,000 square meters
Internal rate of return:	23 percent



69

Construction plan for tire recycling unit

The rubber powder obtained from the recycling of used tires can be used in industries such as road construction, construction, automobile manufacturing, maritime industry, sports, animal husbandry, agriculture, and water supply. Another advantage of recycling worn tires is reducing waste and helping the cycle of materials in nature. Today, studies show that the energy contained in 242 million rings of worn tires is equal to the energy of 12 million barrels of oil.

Fixed capital:	\$ 0.2 million
Working capital:	\$ 0.1 million
Employment:	6 persons
Capital return period:	3 years
Land:	5,000 square meters
Internal rate of return:	36 percent



70

Glycerin

Glycerin is a three-factor alcohol that dissolves in water and ethanol in any ratio due to its hydrogen bond. But it is very little soluble in other solvents. Glycerol is sweet, clear, colorless, odorless and viscous. In the presence of heat and water-absorbing materials, the lost water turns into smoky aldehyde with a bad smell that irritates the human nose. Creating acrolein with this profile is a way to detect glycerol. Glycerol has 3 hydroxyl groups which are responsible for solubility in water.

Fixed capital:	\$ 0.8 million
Working capital:	\$ 0.2 million
Employment:	40 persons
Capital return period:	3 years
Land:	7,000 square meters
Internal rate of return:	29 percent



71

Hodak (ammonium persulfate) oil production



Hodak oil is a type of oil that is used as a substance to prevent excessive stickiness in the process of producing sugar from sugar beets. Therefore, this product is used in the sugar industry and as a fluidizer in the sugar industry. Today, Hodak oil is also produced in Iran. This product is reinforced with the help of nano materials and is even more effective than similar foreign products.

Fixed capital:	\$ 0.5 million
Working capital:	\$ 0.2 million
Employment:	21 persons
Capital return period:	3 years
Land:	3,000 square meters
Internal rate of return:	41 percent



72

Sodium metasilicate production plan

Sodium metasilicate is an inorganic chemical substance with the formula Na_2SiO_3 , which is widely used in various industries. Sodium metasilicate has been used for a long time in alkaline cleaning materials for the domestic and industrial sectors. Sodium metasilicate is widely used in cleaning materials and to make soap formulations. One of the main uses of sodium metasilicate is in the paper and pulp industry.

Fixed capital:	\$ 0.5 million
Working capital:	\$ 0.1 million
Employment:	32 persons
Capital return period:	3 years
Land:	5,000 square meters
Internal rate of return:	39 percent





73

Alkyd resin production plan

Alkyd resin is one of the most widely used resins in the paint industry (solvent-based paints). The uses of this product in synthetic paint industries, use in tooth enamel paint, special coatings for car polishing primers, furniture industries, use in architecture, can be used in building oil paint, can be used in traffic paint for urban tables, industrial and semi-industrial applications in construction All types of stainless steel are used in the manufacture of car repair paints, suitable for the manufacture of furnace paints, suitable for the manufacture of swimming pool paints and automobile industry.

Fixed capital: \$ 1 million
Working capital: \$ 0.2 million
Employment: 21 persons
Capital return period: 3 years
Land: 3000 square meters
Internal rate of return: 42 percent



74

Javal water production plan
(sodium hypochlorite)

Sodium hypochlorite (in English: Sodium hypochlorite) is a chemical substance with the formula NaClO . The solution form of this substance is offered as a bleach under the brand name Javal water. It is also known by different names in different countries. Such as Vitex Bleach, Varokina and Amokina, which are available in the market under different brand names depending on their concentration. This substance is also used in tooth root treatment to wash the tooth canal.

Fixed capital: \$ 0.2 million
Working capital: \$ 0.1 million
Employment: 16 persons
Capital return period: 4 years
Land: 2000 square meters
Internal rate of return: 30 percent

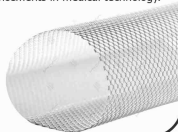


75

Proline mesh production plan

Proline mesh is a type of synthetic mesh that is used in various surgical procedures. The surgical mesh production industry includes the manufacture of mesh from synthetic materials such as polypropylene, polyester and ePTFE. Proline is a type of lace made from proline, an amino acid commonly found in proteins. The proline mesh manufacturing industry is an important part of the medical device manufacturing sector, which is expected to grow in the coming years due to increasing demand for surgical procedures and advancements in medical technology.

Fixed capital: \$ 5 million
Working capital: \$ 1.5 million
Employment: 38 persons
Capital return period: 3 years
Land: 2500 square meters
Internal rate of return: 37 percent



76 Sodium methoxide production plan

Sodium methoxide is also known as sodium methylate in the market. This white powder is used as a catalyst to improve edible fats and oils and in the production of pharmaceuticals and other chemicals. This material is widely used in industry and laboratories.

Fixed capital:	\$ 5 million
Working capital:	\$ 1 million
Employment:	150 persons
Capital return period:	4 years
Land:	35,000 square meters
Internal rate of return:	30 percent



77 Sulfonic acid (alkyl benzene sulfonic acid) production plan

Sulfonic acid or linear alkyl benzene sulfonic acid (LABSA), an oily, brown liquid used as an anionic surfactant in the formulation of many detergents. It is one of the cheapest activators in the washing industry, and it is the most important and widely used ingredient in the formula of pure powders and liquids. Sulfonic acid is soluble in water, non-volatile and absorbent, which is also used as an emulsifier, additives and lubricating oils.

Fixed capital:	\$ 2.5 million
Working capital:	\$ 1.5 million
Employment:	180 persons
Capital return period:	3 years
Land:	30,000 square meters
Internal rate of return:	35 percent



78 Production plan of mono, di and triethanolamine

Monoethanolamine is a liquid organic compound with high viscosity, hydrophilic, colorless and has a smell like ammonia. The chemical formula of this compound is $\text{H}_2\text{NCH}_2\text{CH}_2\text{OH}$. Ethanolamines are used to purify natural gas and residual oil gases in carbon dioxide absorption. In gaseous systems containing carbon dioxide, monoethanolamine can play an important role as a selective absorbent in the production of ammonia, liquid carbon dioxide and dry ice, which requires recovery in the latter case.

Fixed capital:	\$ 55 million
Working capital:	\$ 5 million
Employment:	180 persons
Capital return period:	5 years
Land:	35,000 square meters
Internal rate of return:	25 percent



79 Hot glue production plan

Hot glue is a portable tool that is used by different people to do various home and industrial projects. In this device, the sticky material is melted and directed to the desired location by the nozzle; with the passage of time, the glue cools and hardens and the connection is made. Hot glue is made of granules. These plastic beads are combined with other materials and are supplied as a solid plastic tube. Hot glue is similar to a solid tube that does not have any adhesion in the solid state.

Fixed capital:	\$ 0.7 million
Working capital:	\$ 0.2 million
Employment:	12 persons
Capital return period:	3 years
Land:	1,500 square meters
Internal rate of return:	40 percent



80 Production of UPVC profiles

UPVC profile is one of the most reliable and widely used raw materials in building doors and windows, and its main characteristic is beauty and strength. The aim of this plan is to produce UPVC profiles with a capacity of 2,500 tons (equivalent to 150,000 window frames) per year. Due to the importance of energy saving and the use of quality materials, the consumption of UPVC profile is growing.

Fixed capital:	\$ 3 million
Working capital:	\$ 0.5 million
Employment:	110 persons
Capital return period:	3.5 years
Land:	10,000 square meters
Internal rate of return:	32 percent



81 Polybutylene terephthalate production plan

Polybutylene terephthalate (PBT) is a semi-crystalline engineering thermoplastic material. It has the same properties and composition as polyethylene terephthalate (PET). It is a member of the polyester polymer family. Polybutylene Terephthalate (PBT) is a type of engineering polymer of the type of thermo-soft polyester. This material is the second most used polyester after PET. This element is a type of crystalline engineering thermoplastic that has high stability.

Fixed capital:	\$ 5.5 million
Working capital:	\$ 1.5 million
Employment:	70 persons
Capital return period:	4 years
Land:	49,000 square meters
Internal rate of return:	32 percent



82

Ceramic slab production plan

The word "slab" in Latin means sheet or piece. Production of ceramics in the form of slabs is one of the new processes in the tile and ceramic industry. Among the advantages of ceramic slabs is their high resistance to the penetration of liquids and chemicals. This has made the use of slab ceramics the best option for wet environments.

Fixed capital: \$ 10 million
Working capital: \$ 2 million
Employment: 200 persons
Capital return period: 3 years
Land: 4,000 square meters
Internal rate of return: 41 percent



83

Production plan for rubber parts

Rubbers have high elasticity due to their strength, this is why they are named rubber. The industry of rubber products is of special importance due to its strong connection with the oil industry. Rubber parts are used in various industries. Among the most important fields of application of these parts, the following can be mentioned: defense industries and armed forces, automotive industries, oil and gas and petrochemical industries, food industries, construction industry, tile and ceramic industry, water and sewage companies, medical equipment, devices and household appliances, cosmetics and hygiene products

Fixed capital: \$ 0.5 million
Working capital: \$ 0.2 million
Employment: 38 persons
Capital return period: 3 years
Land: 3,000 square meters
Internal rate of return: 35 percent



84

Production of concrete plasticizers project

Plasticizer is a chemical additive of concrete that is used as a water reducer and increase the slump number of concrete. It is obvious that with the increase of the slump number, the concrete becomes more fluid without losing its properties, which makes it easy to fill the voids of the poured place. Concrete plasticizer, is one of the types of chemical additives to concrete according to Iran's concrete regulations.

Fixed capital: \$ 0.2 million
Working capital: \$ 0.1 million
Employment: 16 persons
Capital return period: 2 years
Land: 3,000 square meters
Internal rate of return: 51 percent

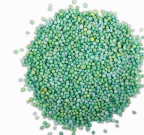


85

Production of urea fertilizer with sulfur coating

Sulfur coated urea fertilizer (S.C.U) is a fertilizer that is produced by encapsulating urea with elements appropriate to the soil, such as sulfur sealant (Sealant), which is composed of several different elements, and the nutrient content of urea fertilizer according to its special formulation in an interval. 40 days' time and according to its slow release property, the most obvious property of which is fertilizer, it provides 100% to the plant. In this case, the amount of fertilizer consumption will be reduced to one third compared to uncoated urea fertilizer, which will result in significant economic savings for the farmer.

Fixed capital: \$ 1.2 million
Working capital: \$ 0.7 million
Employment: 30 persons
Capital return period: 3 years
Land: 20,000 square meters
Internal rate of return: 48 percent



86

Composite pipe

Glass fiber Reinforced Plastic Pipes (GRP) are used for water supply for cities and villages, use in water and other fluid transmission systems in oil and gas industries, construction of freighting networks and use in marine facilities. Composite pipe is resistant to corrosion and has strong mechanical properties. At the same size and thickness, composite pipes are stronger and stronger than pipes made with unreinforced materials. These pipes can better withstand the pressure in the insulation process and they can be installed at greater depths with greater force. These pipes are made without seams and therefore their installation is easier.

Fixed capital: \$ 1 million
Working capital: \$ 0.5 million
Employment: 50 persons
Capital return period: 2 years
Land: 10,000 square meters
Internal rate of return: 30 percent



87

Geomembrane sheet

Geomembrane sheets are used to store and prevent water wastage, insulation of urban waste storage bed, insulation of concrete channels and fuel tanks. Insulation and non-infiltration of water and other liquids into the soil and floor is the main reason for using geomembrane and polyethylene sheets. The durability and lifespan of geomembranes is between 50 and 100 years, and due to its high resistance to the corrosion of solvents, acids, special chemical substances and liquids, it is used in most industries such as agriculture, mining, urban development and construction, aquaculture and waste management. Geomembrane sheets are widely used in the city.

Fixed capital: \$ 1.3 million
Working capital: \$ 0.7 million
Employment: 55 persons
Capital return period: 3 years
Land: 10,000 square meters
Internal rate of return: 32 percent



88

**Industrial carbon black
(carbon black) production plan**

Industrial grade Carbon Black is a very important additive for tires that strengthens elastomers to improve their mechanical properties. Carbon black is used for protection against light, coloring and increasing transmission properties, and by reducing the amount of rubber used and its price (to achieve mechanical efficiency), it saves costs, except for use in the rubber industry, industrial carbon black They are used in printing ink, as a coating for plastics, and in polymers and resins for their electrical conductivity. Industrial carbon black is in the form of black powder and its particle size is between 10 and 500 nanometers depending on its grade.

Fixed capital: \$ 0.2 million
Working capital: \$ 0.05 million
Employment: 23 persons
Capital return period: 4 years
Land: 3,500 square meters
Internal rate of return: 27 percent



89

**Production plan for silver recovery
from film and film emergence solution**

There is silver on the surface of radiological and photographic films as well as in photographic proofing solution. Silver is a precious and relatively rare metal, so that three-quarters of the silver produced in the world is produced through the extraction of other metals and as a by-product. Therefore, recycling of silver from waste such as electronic parts and boards, jewelry, radiology films and photography has been given much attention. Silver recovery is done through the recycling of photographic and radiological films in different ways, including dissolving in nitric acid, plating, electrolysis, etc.

Fixed capital: \$ 0.2 million
Working capital: \$ 0.1 million
Employment: 12 persons
Capital return period: 4 years
Land: 1,000 square meters
Internal rate of return: 30 percent



90

Mold powder production plan

Continuous casting mold powder is added as a lubricant to the surface of the melt in the mold to facilitate the passage of the ingot or slab or bloom through it. Also, the mentioned powder is a thermal insulator and causes the absorption of melting impurities. These raw materials generally include silica (SiO₂), lime (CaO), sodium oxide (Na₂O), feldspars (CaF₂), in some cases oxides and other raw materials. Casting mold powder is widely used for steel casting as well as various casting molds such as bloom, billet and slab. Therefore, the production of this powder is justified considering the numerous steel industries in the region and Khuzestan province.

Fixed capital: \$ 1.2 million
Working capital: \$ 0.5 million
Employment: 80 persons
Capital return period: 3 years
Land: 8,000 square meters
Internal rate of return: 40 percent



91

**Plan for the production of Styrofoam
sheets and parts**

Styrofoam (plastofoam) is a product made from expanded polystyrene foam. This product is also known as Plastofoam and Akasif in Farsi in Iran. In the production process of Styrofoam, expanded polystyrene grains stick to each other by steam after baking, and its sheets or other Styrofoam products are produced.

Fixed capital: \$ 0.25 million
Working capital: \$ 0.2 million
Employment: 20 persons
Capital return period: 3 years
Land: 3,000 square meters
Internal rate of return: 33 percent



92

**Production of woven fiberglass
adhesive tape**

Silk fireproof tape is made of three main materials: fiberglass fibers, Teflon oil and resin. In order to prepare this strip, first the raw material of fiberglass fibers, which is glass, is poured into heat-resistant containers - silica extracted from mines may also be used. After heating, which is about 1220 degrees, the raw materials are melted. Then it is removed from the oven and mixed with resin. The resin used may be polyester, epoxy or vinyl ester.

Fixed capital: \$ 0.2 million
Working capital: \$ 0.1 million
Employment: 16 persons
Capital return period: 3 years
Land: 1,500 square meters
Internal rate of return: 39 percent



93

**Production plan of corrugated sheets
from PS or PP**

Corrugated polymer sheets are used in various sectors including construction, packaging, agriculture and industrial industries. The production line of polymer sheets has the ability to produce different types of sheets in terms of material and thickness. Corrugated sheets include polypropylene and polystyrene sheets, each of these sheets has specific uses and in some cases they replace each other. With the production of these sheets, it will boost the export of plastic products and prevent foreign exchange from leaving the country and generate employment.

Fixed capital: \$ 0.3 million
Working capital: \$ 0.1 million
Employment: 30 persons
Capital return period: 3 years
Land: 3,000 square meters
Internal rate of return: 40 percent





Commerce Agriculture



**Investment opportunities of
Arvand Free Zone**

WWW.ARVANDFREEZONE.COM

ARVAND FREE ZONE, A GOLDEN OPPORTUNITY
FOR INVESTMENT, PRODUCTION AND EXPORT

94

Constructing a 10,000 ton cold storage in Khorramshahr port area

The activity of warehousing and cold storage is one of the basic necessities in the economic development of any country, so that the facilities of this activity can be considered among the infrastructure facilities of the country. The expansion of factories and food production, the time and place mismatch of food consumption and production, the mismatch of import and export food entry and exit times, etc. are among the factors that show the necessity of warehousing and cold storage and its importance. The purpose of this project is to build a cold warehouse in the area of Khorramshahr Port Authority, separate rooms with a capacity of 10,000 tons at a temperature above zero, and in order to provide suitable warehouse and storage facilities, all kinds of fruits, vegetables and summer herbs will be used in this area.

Fixed capital: \$ 1 million
Working capital: \$ 0.1 million
Employment: 28 persons
Capital return period: 5 years
Land: 10,000 square meters
Internal rate of return: 23 percent

For more
information
scan

95

Palm grove construction project

Dates are the fruit of the palm tree that grows in tropical climates. Baskets and mats are made from palm leaves and branches, and bread is made from its core.

The nutritional benefits of dates are many. Only one serving of 100 grams of it can provide about 20% of the daily human need for potassium, along with 7 grams of fiber, 2 grams of protein, and several types of antioxidants. Also, dates are a rich source of copper, manganese, vitamin B6, magnesium and iron.

Fixed capital: \$ 0.1 million
Working capital: \$ 0.1 million
Employment: 10 persons
Capital return period: 6 years
Land: 20,000 square meters
Internal rate of return: 32 percent

For more
information
scan

96

Growing tomatoes in greenhouse

Greenhouse tomato is one of the most profitable greenhouse products and people will welcome tomato fruit all year round. Today, by growing tomatoes in the greenhouse, you can produce more products per square meter and increase the income of the greenhouse. Tomatoes and its conversion products are one of the most important productions of conversion industries in the world. The tomato product is consumed fresh and industrially (Processing) such as paste, sauce, canned food, etc.

Fixed capital: \$ 0.1 million
Working capital: \$ 0.1 million
Employment: 2 persons
Capital return period: 3 years
Land: 3,000 square meters
Internal rate of return: 32 percent

For more
information
scan



Tourism



**Investment opportunities of
Arvand Free Zone**

WWW.ARVANDFREEZONE.COM

ARVAND FREE ZONE, A GOLDEN OPPORTUNITY
FOR INVESTMENT, PRODUCTION AND EXPORT



97 Indoor water park

A water park is a type of amusement park and water recreation that includes sections for water games such as shallow and deep swimming pools, various water slides, artificial river, a place to sunbathe and shower, water play, artificial surfing or flow rider and a wave pool. Arvand Free Zone, with many tourists throughout the year, is a suitable place to build a water park complex.

Fixed capital: \$ 3.5 million
Working capital: \$ 0.1 million
Employment: 180 persons
Capital return period: 4.5 years
Land: 10,000 square meters
Internal rate of return: 25 percent



100 Sports village (including horse riding, camping, etc.), soccer field, tennis court

The sports village is a space consisting of various sports complexes gathered in one place for positive synergy. The gathering of all kinds of sports in a certain place along with various amenities and services will improve the planning and performance of athletes. Today, various sports villages have been built in the world, and prominent sports teams go to these places for camping and use services and hold their preparatory camps in these sports villages.

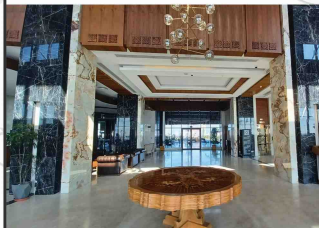
Fixed capital: \$ 8 million
Working capital: \$ 0.2 million
Employment: 100 persons
Capital return period: 5 years
Land: 150,000 square meters
Internal rate of return: 25 percent



98 Arvand 5-star hotel construction project

The 5-star hotel will have approximately 200 rooms with a capacity of 430 people. This hotel is planned in 5 floors on the ground floor, the ground floor of which will be dedicated to the lobby and services. The tourism industry in Arvand free zone has very high capacities for growth and development. This area deserves to develop the tourism industry due to the presence of domestic and Iraqi tourists.

Fixed capital: \$ 5 million
Working capital: \$ 0.1 million
Employment: 100 persons
Capital return period: 5 years
Land: 5,000 square meters
Internal rate of return: 32 percent



101 Indoor and outdoor amusement park in Arvand Free Zone

Family Entertainment Center or FEC in short are indoor amusement parks. These spaces are also known as indoor theme parks. In fact, indoor amusement parks are a small version of large outdoor amusement parks that have fewer mechanical devices than outdoor amusement parks. In general, the target market of users of the services of this collection are the residents of Arvand Free Zone. Also, a part of the region's tourist population can be considered as visitors to the amusement park.

Fixed capital: \$ 2 million
Working capital: \$ 0.1 million
Employment: 50 persons
Capital return period: 5 years
Land: 12,000 square meters
Internal rate of return: 25 percent



99 Recreational beach and reconstruction of the water sports center's boating club (Arvand-e-Saghir)

Nowadays, recreational beaches are known as lively urban places in the world, which are built near seas and rivers and attract a large number of tourists. This project intends to use the potential of the Arvand River, located in Arvand Free Zone, to provide a suitable place for water sports and beach recreation for citizens and tourists. The facilities considered for this plan include a space for all kinds of water sports such as shuttle and boat rides, a private beach for women and men, a restaurant, a food court, a variety of group games such as table football, air hockey, etc.

Fixed capital: \$ 2 million
Working capital: \$ 0.1 million
Employment: 50 persons
Capital return period: 5.5 years
Land: 50,000 square meters
Internal rate of return: 23 percent



102 Cinema campus and Plateau in Arvand Free Zone

The construction of a cinema and plateau campus in Arvand Free Zone is predicted as one of the needs of the region. Today, the existence of cinemas and theaters for public use is considered as one of the indicators of cultural growth and development in the world. A cinema campus or a cinema complex (Multi-theater Cinema) is a cinema that has several theaters with special facilities. The facilities of this project include 3 cinema halls, amphitheater hall and gallery, restaurant, coffee shop, fast food, book store, parking lot, restrooms, prayer room, buffet, etc. and office area.

Fixed capital: \$ 4 million
Working capital: \$ 0.02 million
Employment: 40 persons
Capital return period: 3 years
Land: 2,000 square meters
Internal rate of return: 31 percent





103

Wound clinic

The wound clinic is for the treatment and care of chronic and acute wounds (bed sores, diabetic foot ulcers, vascular wounds, burns, etc.) using modern treatment methods and under the supervision of an infectious disease specialist, a surgeon and an orthopedist. Currently, people with chronic wounds are admitted to hospitals for treatment, while according to international standards, these people go to wound clinics for treatment. The number of standard wound clinics in the country is few and it is necessary to build them. This area is suitable for the implementation of this project due to the proximity and existence of a common border with Iraq and the absence of a specialized wound clinic.

Fixed capital: \$ 0.7 million
Working capital: \$ 0.1 million
Employment: 35 persons
Capital return period: 5.5 years
Land: 300 square meters
Internal rate of return: 23 percent

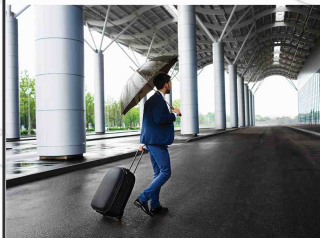


104

Multi-purpose passenger service complex in Shalamcheh

The main function of multi-purpose service complexes is to focus on providing services and providing comfort and convenience for passengers and drivers. In border areas where the passage of foreigners and entry and exit from the border is the main function, a cross-road complex is needed to concentrate and organize affairs. Due to the location of Arvand Free Zone at the most border point between Iran and Iraq and the daily traffic of thousands of cars from Shalamcheh border, there is a need for measures in this area.

Fixed capital: \$ 2 million
Working capital: \$ 0.1 million
Employment: 100 persons
Capital return period: 3 years
Land: 500,000 square meters
Internal rate of return: 33 percent

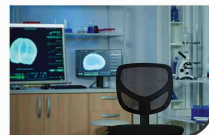


105

Chemotherapy center construction project

Due to the type of people's nutrition and machine life, unfortunately, many families are affected by cancer, and nowadays cancer is considered one of the major health problems. Cancer of the second rank is the most common cause of death all over the world. In developed countries, through early diagnosis and also developing medical technology and methods, the rate of improvement in cancer is about 55 to 66 percent.

Fixed capital: \$ 10 million
Working capital: \$ 2 million
Employment: 60 persons
Capital return period: 3 years
Land: 4,000 square meters
Internal rate of return: 35 percent

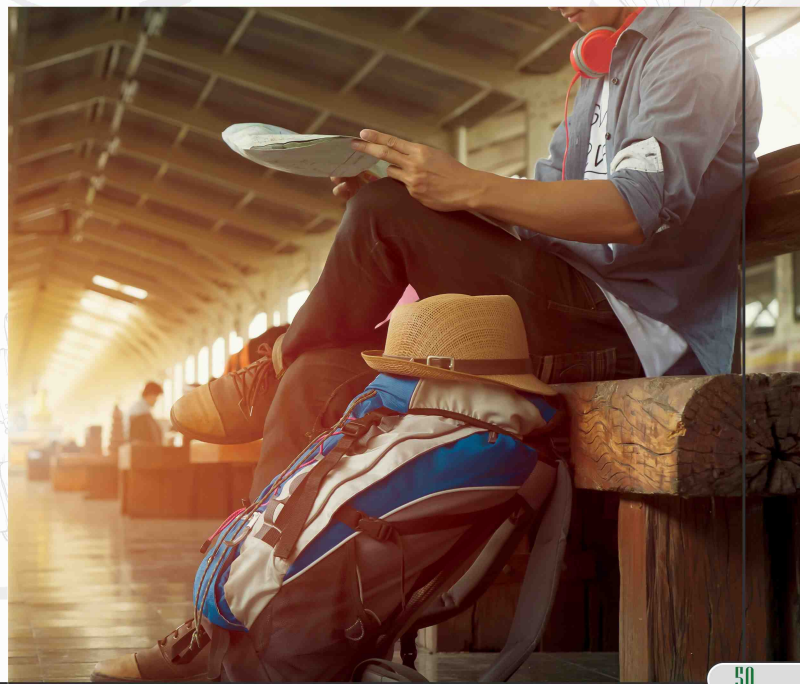


106

Modern market of fisheries supply

The sports village is a space consisting of various sports complexes gathered in one place for positive synergy. The gathering of all kinds of sports in a certain place along with various amenities and services will improve the planning and performance of athletes. Today, various sports villages have been built in the world, and prominent sports teams go to these places for camping and use services and hold their preparatory camps in these sports villages.

Fixed capital: \$ 0.7 million
Working capital: \$ 1.5 million
Employment: 150 people
Capital return period: 2.5 years
Land: 10,000 square meters
Internal rate of return: 38 percent



Tourism

